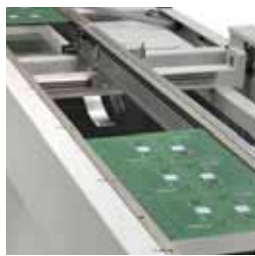


MGU Manual Gate Unit

EASY LINE



AUTOMATION



- Easy and Reliable Passage
- Light Opening Mechanism
- Lean Design - Optimized Footprint
- User Friendly Interface - LCD Touchscreen
- Easy Configuration
- Integrated Diagnostic Tool
- Welded Steel Frame

OPTTE
EXPERTS IN FACTORY AUTOMATION

MGU

Manual Gate Unit

PCB Specification	
PCB Width:	50 - 360 mm (1.97 - 14.17")
PCB Length:	50 - 460 mm (1.97 - 18.11")
PCB Thickness:	0.5 - 4 mm (0.02 - 0.15")
Height of Components (Top Side):	max. 100 mm (3.9")
Height of Components (Bottom Side):	max. 50 mm (2.0")
PCB Weight:	2.5 kg
Technical Specification	
Cycle Time:	8 sec
PCB Edge Support:	2.5 - 5 mm (0.1 - 0.2")
PCB Transport Speed:	300 mm/sec (11.8"/sec)
Transport Height:	920 ± 50 mm (36.2 ± 1.9 ")
Transport Direction:	L -> R
Passage Width:	760 mm (29.9")
Energy Requirements:	230 ± 10%, 50Hz - 110V ± 10%, 60 Hz - 100 VA
Color:	RAL 7035
Dimensions (L x D x H):	1,500 x 760 x 1,300 mm (59.0 x 29.9 x 51.1")
Weight:	160 kg
Control Unit:	Omron
Standards:	CE Approved
Interface:	SMEMA
Options	
Automatic Width Adjustment	
Bus System	RS 232 / RS 485, Ethernet
SMEMA Specific	Siemens, SMPI, Fuji, Panasonic, Sanyo
Transport height	
Transport speed adjustable 100 to 800 mm/s	



■ IPTE N.V.

Geleenlaan 5
3600 Genk
Belgium
Tel.: +32 (0)89 623 000
Fax.: +32 (0)89 623 010
email: info@ipte.com

■ IPTE SALES

Detailed information on our worldwide sales offices can be found on our website at www.ipte.com