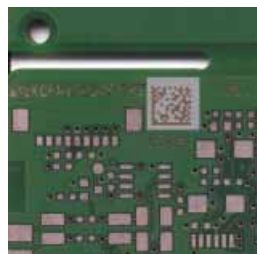


EasyView Universal Scanner

AUTOMATION



- 2D Matrix Code, Bar Code Scanner
- SMD, Odd-Form Components Scanner
- Dispense points Scanner
- Large Scanning Area
- User Friendly HMI
- Based on MODI Adomo Technology
- PCB or Carrier Transport
- Fast PCB Exchange Time

OPTTE
EXPERTS IN FACTORY AUTOMATION

EasyView Universal Scanner

PCB Specification	
PCB Thickness minimum:	0.8 mm (0.03")
PCB Length:	50 - 460 mm (1.97 - 18.11")
PCB Width:	50 - 460 mm (1.97 - 18.11")
PCB Ratio:	0.8 (Length >= 0.8 x Width)
PCB Bottom Clearance:	50 mm (1.97")
PCB Weight:	2.5 kg (5.5 lbs)
Technical Specification	
Field of View:	max 460 x 460 mm (18.11 x 18.11")
Picture Positioning Time:	100 msec
Camera Resolution:	640 x 480 pixels
Machine Specification	
Transport Height:	940 mm ± 25 mm (37" ± 1") (SMEMA)
PCB Exchange Time:	typical 3 sec
PCB Edge Support:	2.5 - 5 mm (0.1 - 0.2") adjustable
Transport Speed:	100 - 800 mm/sec (4 - 32"/sec)
Transport Direction:	L->R, R->L (software selectable)
Dimensions (L X D x H):	600 x 800 x 1,910 mm (23.6 x 31.5 x 75.2")
Color frame / plating:	RAL 7035
Standards:	CE, SMEMA
Energy Requirements:	1 P 110V or 1 P 230 V - 1 kVA
Options	
Camera Resolution according to application needs	
Double Side Scanner	
Dual Lane	
Network interface to customer database	



■ IPTE N.V.
 Geleenlaan 5
 3600 Genk
 Belgium
 Tel.: +32 (0)89 623 000
 Fax.: +32 (0)89 623 010
 email: info@ipte.com

■ IPTE SALES
 Detailed information on our
 worldwide sales offices can
 be found on our website at
www.ipte.com

www.ipte.com