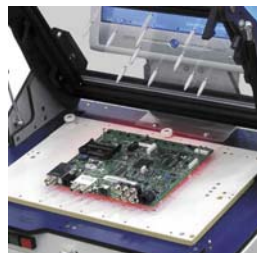


# ANT PXI-based Manual Test Handler

PXI

TEST  
AUTOMATION



- Stand-alone ICT, Functional or Combined Test System
- Modular 19" PXI-based, GPIB
- Compact, Light, Desktop Handler
- Manual or Pneumatic Fixture
- Software based on TestStand™, LabWindows/CVI™, AIS, ASC
- Removeable Needle Plate and Pusher Plate

**IPTE**  
EXPERTS IN FACTORY AUTOMATION

# ANT PXI-based Manual Test Handler

Technical Specification	
Power Requirements:	100 - 240 V, 50-60 Hz, max 16A
PXI Chassis:	8 slots
Controller:	PXI Embedded PC Celeron 850 MHz, 512 MByte RAM, 30 GB HD, USB 1.1, 17" CRT, ethernet, Windows <sup>XP</sup>
Bar code reader:	1D bar code handscanner
Press Force:	250 N
4HE Frame Dimensions (L x D x H):	550 x 500 x 500 mm (21.6 x 19.7 x 19.7") excluding monitor
6HE Frame Dimensions (L x D x H):	550 x 500 x 600 mm (21.6 x 19.7 x 23.6") excluding monitor
Weight:	30 - 50 kg (66 - 110 lbs) depending on equipment
Standards:	CE Approved
Max. PCB Dimensions:	330 x 200 mm (13 x 8")
Fixture Exchange time:	< 5 minutes
Software:	TestStand <sup>TM</sup> AIS-800, ASC-800, CPC-800 Light
Options	
External CD-RW (USB)	
Pentium 4 Upgrade	PXI Embedded PC P4 2.2 GHz. 512 MByte RAM, 30 GB HD, USB 2.0, ethernet, Windows <sup>XP</sup>
Monitor	TFT 17" on top
GPIB Interface	IEEE 488.2
Press Force:	500 N (Pneumatic Fixture Upgrade), 6 bar
Optional Test Equipment	
PXI Chassis:	14 slots
PXI Chassis:	21 slots
Spider:	see Spider specification (5 PXI slots + 1 PXI slot per 96 testpoints)
Fixed DUT Power Supply:	3.3 V (25 W), 5 V (25 W), 12 V (60 W), 24 V (60 W)
Programmable Power Supply:	2 channels (30 V / 2 A 30 W)
Serial Port:	4-fold RS232 standard, up to 115 kB (1 PXI slot)
Digital I/O:	32 Input, max 24V + 32 Output, isolated max 500 mA sink current (1 PXI slot)
Scope Card:	14 bit resolution, 100 MS/s non interleaved, 2GS/s interleaved 2 channels, 1 external trigger (normal + video line trigger) (1 PXI slot)
DAQ:	16 bit resolution, 333 kS/s, 16SE Input or 8 DI, Output 2, max $\pm 10$ V (1 PXI slot)
DMM:	6½ digit, Voltage max 330V / Current max 2.5 A / Resistance max 330 MOhm (1 PXI slot)
HF Switching:	Up to 300 MHz, 8 x 9 coax matrix (1 PXI slot)
LF Switching:	Up to 10 MHz, 16 differential multiplexer (1 PXI slot)
Extensions:	other options are possible. To be specified



## ■ EUROPE

IPTE n.v.  
Industriezone 9  
Geleenlaan 5  
3600 Genk  
Belgium  
Tel.: +32 (0)89 623 000  
Fax.: +32 (0)89 623 010  
Email: info@ipte.com

## ■ AMERICAS

IPTE, LLC  
1235 Old Alpharetta Road  
Suite 110  
Alpharetta, GA 30005  
USA  
Tel.: +1-770-360 5523  
Fax.: +1-770-360 9105  
Email: info@ipte.com

## ■ ASIA PACIFIC

IPTE Asia Pacific Pte Ltd  
10 Bukit Batok Crescent  
#07-07  
The Spire  
Singapore 658079  
Tel.: +65 6274 4688  
Fax.: +65 6274 4088  
Email: info@ipte.com