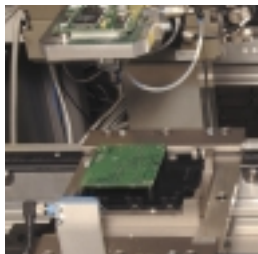
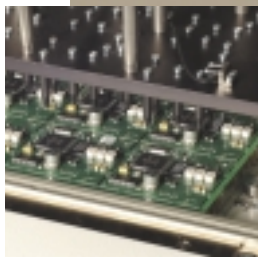


# Test and Assembly Line for Central Control Unit

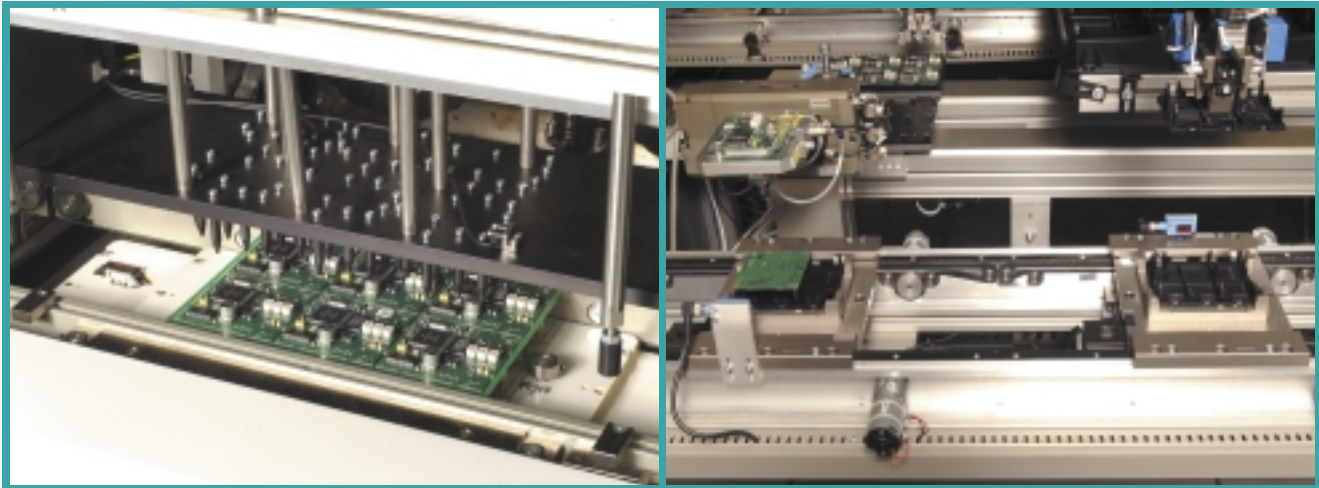
## AUTOMOTIVE APPLICATION



Test and production line to assemble 'Central Control Units' used in automobiles. The first part of the line is a test line for ICT, functional test and programming of multiple PCB-panels. After the test the good boards are depaneling into 6 individual PCB's and transported into the assembly line. In the assembly line the PCB's are placed and fixed in the bottom part of the unit. The next process places the top cover of the unit followed by a measurement of the exact height of the closed unit. After the assembled units have been tested, they are labeled and packed in magazines.

- Loading and Unloading
- Testing
- Programming and Flashing
- Handling
- Depaneling
- Feeding
- Pick & Place
- Assembly
- Measuring
- Final Testing
- Labeling
- Packing

# Test and Assembly Line for Central Control Unit



## Equipment

- ITS Test Handler
- TTU Turn Unit
- SpeedRouter
- Traverser
- BTR Transport Unit
- BAT-1600 Pick & Place Cell
- BAT-1000 Pick & Place Cell
- BAT-1600 Labeling Cell
- AT-1600 Packing Cell
- Feeders

## Facts

- Test time: 42 sec per PCB
- Assembly time: 7 sec per product
- Output per year: 1.2 million
- Up-time: > 80 %
- Products per minute: 8

### ■ EUROPE

IPTE n.v.  
Industriezone 9  
Geleenlaan 5  
3600 Genk  
Belgium  
Tel.: +32 (0)89 623 000  
Fax.: +32 (0)89 623 010  
email: info@ipte.com

### ■ AMERICAS

IPTE, LLC  
1235 Old Alpharetta Road  
Suite 110  
Alpharetta, GA 30005  
USA  
Tel.: +1-770-360 5523  
Fax.: +1-770-360 9105  
email: info@ipte.com

### ■ ASIA PACIFIC

IPTE Asia Pacific Pte Ltd  
10 Bukit Batok Crescent  
#07-07  
The Spire  
Singapore 658079  
Tel.: +65 6274 4688  
Fax.: +65 6274 4088  
email: info@ipte.com



[www.ipte.com](http://www.ipte.com)