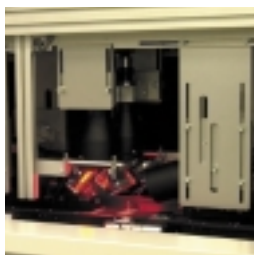


DC/DC Converter Test Line

TELECOM APPLICATION



After the Burn-In Test a magazine unloader places the burn-in cards with the DC/DC modules into the line. In The first cell the DC/DC modules are pressed out of the burn- in cards and are placed into a carrier. Each carrier holds 8 products. The carrier then moves on into the test handlers where the products go through a High Voltage Test and a Functional Load Test. After being tested the products move on for the next process: a high precision vision test where coplanarity, lead span and lead offset are checked. In the next cell the products are laser marked and vision tested. At the end of the line the products are taken out of the carriers and packed in tubes or Jedec trays.

- Loading and Unloading
- Handling
- Press
- Pick & Place
- Testing
- Vision Test & Control
- Laser Marking
- Packing



EXPERTS IN FACTORY AUTOMATION

DC/DC Converter Test Line



Equipment

- BAT-1000 Pick & Place
- ITS Test Handler
- BAT-1600 Vision Cell
- BAT-1600 Laser Cell
- BAT-1600 Packing Cell

Facts

- Cycle time: 13 sec/carrier
- Products per minute: 35
- Up-time: 80 %

■ EUROPE

IPTE n.v.
Industriezone 9
Geleenlaan 5
3600 Genk
Belgium
Tel.: +32 (0)89 623 000
Fax.: +32 (0)89 623 010
email: info@ipte.com

■ AMERICAS

IPTE, LLC
1235 Old Alpharetta Road
Suite 110
Alpharetta, GA 30005
USA
Tel.: +1-770-360 5523
Fax.: +1-770-360 9105
email: info@ipte.com

■ ASIA PACIFIC

IPTE Asia Pacific Pte Ltd
10 Bukit Batok Crescent
#07-07
The Spire
Singapore 658079
Tel.: +65 6274 4688
Fax.: +65 6274 4088
email: info@ipte.com

