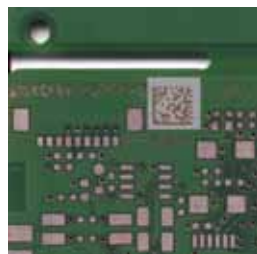


# EasyMarker Laser Marking System



PRODUCTION  
AUTOMATION



- Economical Solution
- Fixed Laser, Fixed Transport
- Standard Marking Field Processing
- Smallest Spot Diameter
- User Friendly HMI
- 10W-30W CO<sub>2</sub> Laser
- PCB or Carrier Transport
- Fast PCB Exchange Time

**OPTTE**  
EXPERTS IN FACTORY AUTOMATION

# EasyMarker Laser Marking System

PCB Specification	
PCB thickness minimum:	0.8 mm (0.03")
PCB thickness maximum:	4 mm (0.15")
PCB Length:	50 - 460 mm (2.0 - 18.1")
PCB Width:	50 - 360 mm (2.0 - 14.1")
PCB Top clearance:	80 mm (3.15")
PCB Bottom Clearance:	50 mm (1.97")
PCB weight:	2.5 kg
Technical Specification	
Standard 10W CO <sup>2</sup> laser	
Field of view:	70 x 70 mm (2.7 x 2.7")
Field of marking:	70 x 70 mm (2.7 x 2.7")
Position accuracy:	± 0.5 mm
Marking speed:	250 char/sec
Machine Specification	
Transport height:	920 ± 50 mm (36.2 ± 1.9")
PCB exchange time:	3 sec
PCB edge support:	2.5 to 5.0 mm (0.1 - 0.2")
PCB transport speed:	300 to 700 mm/sec (11.8 to 27.5"/sec)
Transport direction:	L to R / R to L
Dimensions (L x D x H):	500 x 1,000 x 1,500 mm (19.7 x 39.4 x 59.0")
Weight:	120 kg
Color frame / plating:	RAL 7035
Standards:	CE, SMEMA, Laser Class 1
Compressed Air:	5 - 7 bar, min 20 NL/min, according to DIN ISO 8573 3.4.5
Energy Requirements:	230 V AC, 50 Hz, 750 VA
Pass through / stop inlet	
Options	
Other Field of View on request	
Other Field of Marking on request	
Automatic width adjustment	
Electrical width adjustment	
Fume extraction System	
Mix Production	
Verify@Mark	
1D/2D Reader	
125 μ spotsize	
Positioning Accuracy ± 0.1 mm	
Network Interface with Customer Database	



#### ■ IPTE N.V.

Geleenlaan 5  
3600 Genk  
Belgium  
Tel.: +32 (0)89 623 000  
Fax.: +32 (0)89 623 010  
email: info@ipte.com

#### ■ IPTE SALES

Detailed information on our worldwide sales offices can be found on our website at [www.ipte.com](http://www.ipte.com)