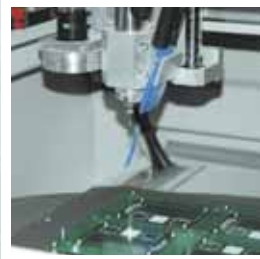


EasyRouter Depaneling System

AUTOMATION



- High Speed, Low Stress Separating Process
- Ideal for High Diversity Production
- Programmable Servo Motors
- High Frequency Millings Spindle
- Top Side Routing
- Loading/Unloading during Depaneling Process
- Two Position Turntable
- Camera Assisted Teaching (CATS)

OPTTE
EXPERTS IN FACTORY AUTOMATION

EasyRouter Depaneling System

Technical Specification	
Working Area (L x W):	450 x 380 mm (17.2 x 15.0")
Component Height:	Top side: 30 mm (1.18") Bottom side: 70 mm (2.76")
PCB Thickness:	0.5 to 3mm (0.02 - 0.12")
PCB Weight:	3 kg (1.35 lbs)
PCB Loading/Unloading:	Manual, Front Side, Two Position Turn Table
Working Height:	880 to 970 mm (34.7 - 38.2")
Ionisation:	Standard
X,Y, Z Axes:	Spindle
Axes Travel Stroke (X x Y x Z):	545 x 400 x 60 mm (21.4 x 15.7 x 2.3")
Positioning Accuracy X,Y:	± 0.05 mm (0.002")
Positioning Accuracy Z:	± 0.1 mm (0.004")
Position Repeatability X,Y:	± 0.02 mm (0.0008")
Moving Speed X,Y,Z:	750, 750, 750 mm/sec (29.5, 29.5, 29.5"/sec)
Acceleration X,Y,Z:	15, 15, 15 m/sec ² (0.6, 0.6, 0.6"/sec ²)
Cutting Speed:	Up to 60 mm/sec (2.3"/sec)
Cutting Process Accuracy X,Y:	± 0.15 mm (0.0001")
Cutting Tool Diameter:	0.8 to 3.1 mm (0.03 - 0.12")
Cutting Tool Insertion:	Manual
Cutting Tool Speed / Power:	up to 60,000 rpm / 170 W
Z-axis Moment while Cutting:	< 30 N
Cutting Possibilities:	Linear, Arc, Circular
Energy Requirements:	3 x 400 V - 1.5 kVA
Compressed Air:	6 bar, min 20 L/min, according to DIN ISO 8573 3.4.5
Color:	RAL 7035
Dimensions (L x D x H):	1,000 x 1,400 x 1,300 mm (39.3 x 55.1 x 51.1")
Weight:	Approx. 750 kg
Noise Level:	< 70 dBA at 1.2 m
Software Operating System:	WindowsXP
Standards:	CE Approved
Standard Features	Options
Off-Line Programming	± 0.1 mm (0.004") Fiducial Cutting Accuracy
On-Line Programming in Run Mode	Vacuum Cleaner
CATS (Camera Assisted Teaching)	Tool Break Detection
Password Protection	Cutting Force Monitoring
	Tool Life Time Monitoring
	CAD Data Input Processor
	Traceability Software



■ IPTE N.V.

Geleenlaan 5
3600 Genk
Belgium
Tel.: +32 (0)89 623 000
Fax.: +32 (0)89 623 010
email: info@ipte.com

■ IPTE SALES

Detailed information on our worldwide sales offices can be found on our website at www.ipte.com