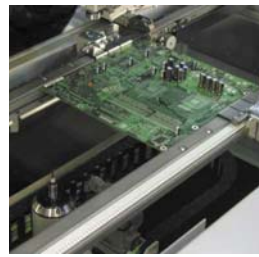


FlexRouter Depaneling System

PRODUCTION
AUTOMATION



- Flexible and Modular, Low Stress Separation Process
- Fast Operation With Linear Motor Technology
- Programmable Gripper
- Capable of Routing and/or Sawing
- Broken Bit Detection with Automatic Tool Change
- In-Line and Off-Line Capable
- Intuitive Operator Interface

OPTTE
EXPERTS IN FACTORY AUTOMATION

FlexRouter Depaneling System

Technical Specification	
Working Area:	410 x 330 mm (16.1 x 13.0")
Trackwidth:	80 - 330 mm (3.1 - 13") Manual adjustable
PCB Infeed Height:	940 - 965 mm (37 - 38"), SMEMA
Component Height:	Top side: 60 mm (2.36") Bottom side: 8 mm (0.31")
X-Y Actuation:	Linear motor for linear and non-linear movements
Z Actuation:	Servo motor
C Actuation:	Pneumatic Actuation: 0° - 90° or 0° - 180°
Measuring System Resolution:	± 0.001 mm (0.0004")
Positioning Precision:	± 0.03 mm (0.0012")
System Repeatability:	± 0.01 mm (0.0004")
Traversing Velocity:	X,Y up to 30 m/min (500 mm/sec, 19.68 "/sec) Z up to 20 m/min (330 mm/sec, 9.84 "/sec) C < 1 sec/90°
Tool Type:	Router: feed-rate up to 83 mm/sec (3.25"/sec) Saw: feed-rate up to 200 mm/sec (7.87"/sec)
Automatic Tool Exchange:	Tool magazin for 20 end mills Manual exchange for disk cutters
Air Ionization:	Integrated
Dust Vacuum:	External Vacuum cleaner with automatic machine monitoring Automatic forced cleaning and filter level display with filter monitoring
PCB Transport System:	3 Segments, Motor Width Adjustment SMEMA
PCB Dimensions (L x D):	Min: 50 x 50 mm (2 x 2") Max: 500 x 380 mm (19.7 x 15")
PCB Thickness:	0.5 - 4.5 mm (0.02 - 0.17")
Energy Requirements:	3 x 400 V - 6 kVA
Compressed Air:	6 bar, min 40 NL/min, according to DIN ISO 8573 3.4.5
Color:	RAL 7032
Dimensions (L x D x H):	1,660 x 1,350 x 2,300 mm (65.3 x 53.1 x 90.0")
Weight:	1,500 kg
Standards:	CE Approved
Options	
Dual lane conveyor	Theta rotating gripper (+/- 180°)
Automatic width adjustment	Automatic tool change
Flat belt outfeed conveyors	Vacuum cleaners
Data matrix reader	Brush cleaning
Bar code reader	Rotating air brushes
Double spindle fixed position	Magazine loaders and unloaders
Double spindle - automatic distance change	Convert SW .dxf -> DIN
Pneumatic Grippers	Vision system for teaching
Servo gripper (75 - 206 mm) (2.1 - 8.1")	Vision system for position correction



■ EUROPE

IPTE n.v.
Industriezone 9
Geleenlaan 5
3600 Genk
Belgium
Tel.: +32 (0)89 623 000
Fax.: +32 (0)89 623 010
email: info@ipte.com

■ AMERICAS

IPTE, LLC
1235 Old Alpharetta Road
Suite 110
Alpharetta, GA 30005
USA
Tel.: +1-770-360 5523
Fax.: +1-770-360 9105
email: info@ipte.com

■ ASIA PACIFIC

IPTE Asia Pacific Pte Ltd
10 Bukit Batok Crescent
#07-07
The Spire
Singapore 658079
Tel.: +65 6274 4688
Fax.: +65 6274 4088
email: info@ipte.com