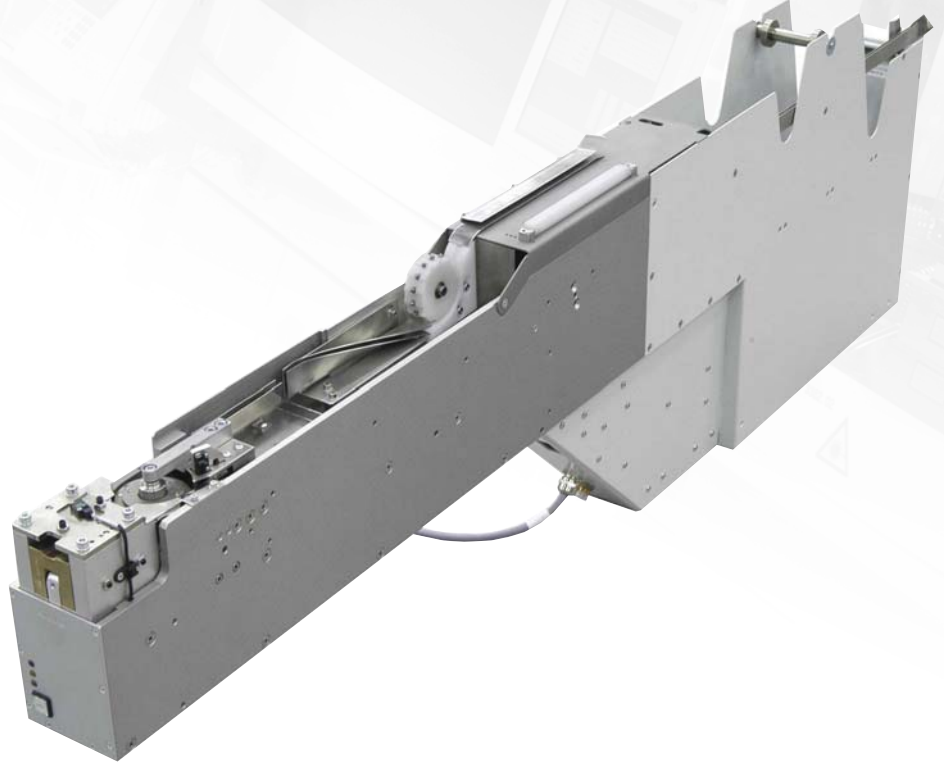
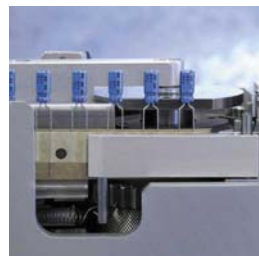


RTF Radial Tape Feeder

PRODUCTION
AUTOMATION



- Efficient and Productive Feeding
- Integrated Lead Cutting Unit
- Wide Component Range
- Easy Readjustment
- Excellent Price-Performance Ratio
- Intelligent Communication with Placement System
- Easy User Interface
- Fits All OFP-Equipment

OPTC
EXPERTS IN FACTORY AUTOMATION

RTF Radial Tape Feeder

Technical Specification	
Cycle Time per Component:	< 0.8 sec. all included
Outside Dimension (L x D x H):	90 x 1,053 x 356 mm (3.5 x 41.0 x 14.0")
Tape Norm:	DIN IEC 286 and EIA296
Tape Height	Max. 38 mm (1.6")
Component Dimensions:	Max. Diameter 12 mm (0.5") and 24 mm (1") height
Standard Grid:	2.4 - 24 mm (0.1 - 1")
Leads Diameter:	0.4 - 1 mm (0.01 - 0.03") Round, Oval or Square
Lead Cutting:	0° (other angles are optional)
Reel Diameter:	Max. 400 mm (16") or optional Ammo Pack
Pick Position Repeatability:	± 50 µ at 4 Sigma
Color:	Blank Anodized
Electrical Power:	24 V
Interface:	IPTE (others on request)
Operator Panel:	IPTE
Compressed Air:	5 - 8 bar
Options	
Lead cutting other degrees	
Multi Step Tool (e.g. Pre-Forming)	
Tape Cutter	
Component Recognition	
Braked Tape Reel Axis	
Component quantity sensing arm tape reel	
Component quantity sensing Ammo Pack	
Polarity check (electrical or optical) of components	
End of Tape sensor	



■ EUROPE

IPTE n.v.
Industriezone 9
Geleenlaan 5
3600 Genk
Belgium
Tel.: +32 (0)89 623 000
Fax.: +32 (0)89 623 010
Email: info@ipte.com

■ AMERICAS

IPTE, LLC
1235 Old Alpharetta Road
Suite 110
Alpharetta, GA 30005
USA
Tel.: +1-770-360 5523
Fax.: +1-770-360 9105
Email: info@ipte.com

■ ASIA PACIFIC

IPTE Asia Pacific Pte Ltd
10 Bukit Batok Crescent
#07-07
The Spire
Singapore 658079
Tel.: +65 6274 4688
Fax.: +65 6274 4088
Email: info@ipte.com

www.ipte.com